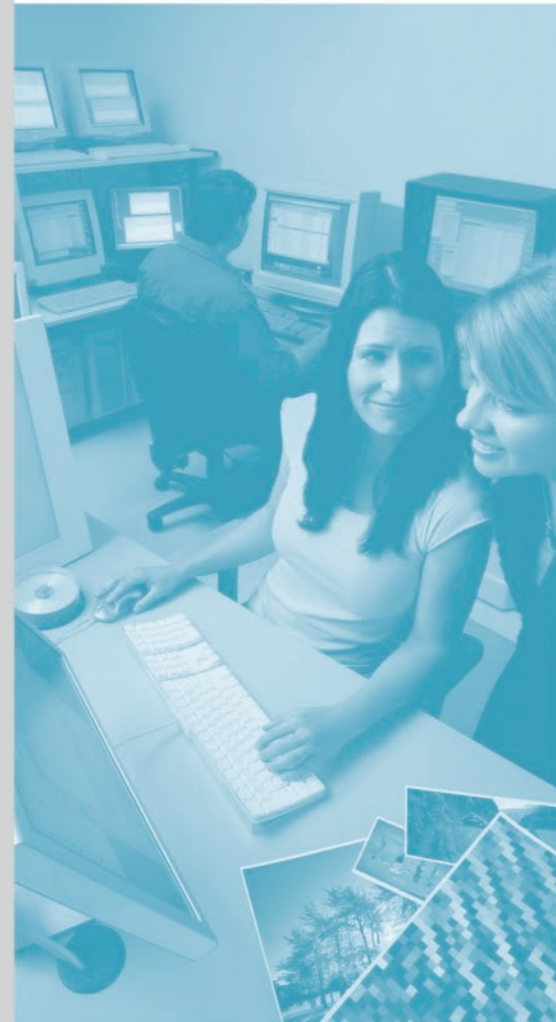




CtP
COBRA 8



SPECIFICATION:

Laser type	Violet 120 mW laser diode (405 nm)
Drum	Internal aluminium alloy with hard anodised finish
Max plate	1080 (register edge) x 850 mm, 0.3 mm thick (42.5" x 33.4" x 0.012")
Min plate	510 (register edge) x 400 mm, 0.15 mm thick (20.1" x 15.75" x 0.006")
Grip edge	15 mm (0.6") minimum at front edge of plate
Image area	1080 x 835 mm (42.5" x 32.8") maximum
Spot size	10 microns
Resolution	2540 dpi
Repeatability	± 5 microns image to image; ± 25 microns plate to plate
Imaging speed	6 mm per second, using 36,000 rpm single-facet spinner
Throughput	Up to 16 B1, 20 B2, and 28 B3 plates per hour
Plate handling	Manual load and unload
Plate types	Violet sensitive aluminium plates - Silver and Photopolymer Yellow safe light required for plate handling
Registration	Various combinations of the following are available: 830mm 'Komori' press notch registration 780mm 'Bacher' press notch registration 425mm 'Bacher' press notch registration 3-pin Corner registration
Approvals	CE certification: EN61000 EMC including FCC CFR47, EN60950 LVD, EN60825 Laser, MET-UL: UL60950
Dimensions	1725 x 1600 x 900 mm (w x h x d) - 68" x 63" x 35.5"
Weight	400 kg (engine and front-end PC), 520 kg (in single crate)
Operating Environment	+15°C to +25°C, 20% to 60% relative humidity (non-condensing)
Platform	High spec external Windows PC
File formats	Images 1-bit TIFF bitmap files, compressed formats CCITT Group 4, LZW and PackBits.
RIP	Navigator Harlequin RIP supporting PS, PDF and XPS
Applications	Engine control and plate management software
Diagnostics	Remote diagnostics as standard
Job Archival	Writeable CD ROM

CONTACT YOUR HIGHWATER DEALER FOR MORE INFORMATION:



CtP
COBRA 8

COMPUTER TO PLATE > INNOVATION TO REALITY



**HIGH
WATER**

> **HIGHWATER DESIGNS LTD**
COTSWOLD BUILDING, THE BARLANDS
LONDON ROAD, CHELTENHAM,
GL52 6UT, UNITED KINGDOM.
MAIN: +44 (0) 1242 542100
FAX: +44 (0) 1242 251600

WWW.HIGHWATER.CO.UK



CtP
COBRA 8

PERFORMANCE

- Superb imaging quality
- 120mW violet laser diode
- Screening resolutions of over 200 lpi
- Output up to 16 8-up plates per hour

SIMPLICITY

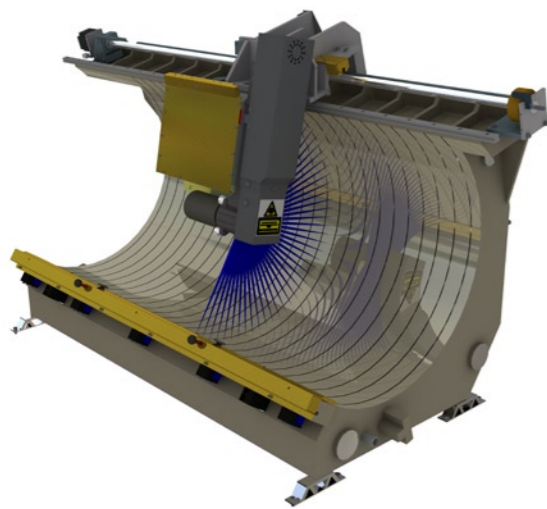
- Easy to use control software
- Simple plate handling
- Reliable and accurate imaging
- Minimal training requirements

VERSATILITY

- Images all violet plates on the market today
- Sizes from 1080x850 down to 510x400mm
- Flexible registration system
- Plates punched after imaging

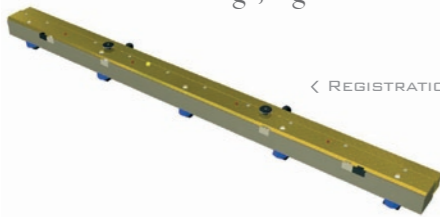
FUTURE PROOF

- 120mW laser diode gives a wide range of plate options into the future
- Chemical free capable
- Fast return on investment



PRECISION MEETS EASE.

Cobra 8 is a manual load-unload CtP engine designed specifically for the B1/8-up commercial print market. It exposes violet metal plates at high resolution, using high precision internal drum imaging optics and a 120mW laser diode. The plate is placed directly into the drum by the operator and is located in the registration system. Vacuum is then applied to hold the plate in perfect register while it is imaged at a resolution of 2540 dpi (100 dpmm) at a speed of 6mm per second. An B1/8-up plate takes only three minutes to image, regardless of content.



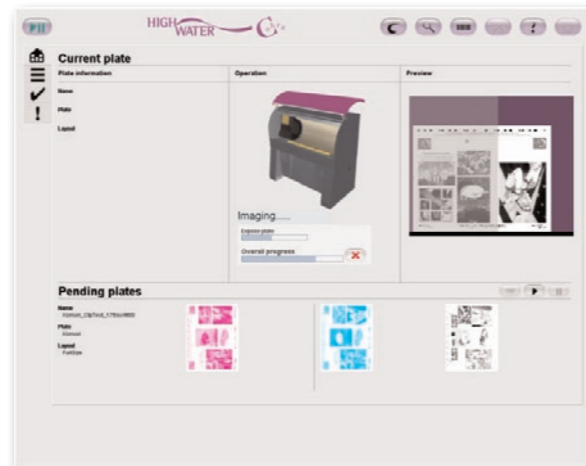
REGISTRATION SYSTEM

CONTROL MEETS VERSATILITY.

The Cobra CtP solution includes a high-spec workstation running HighWater's innovative output console providing all the tools needed to manage your plate imaging. Supplied with the advanced Navigator Harlequin RIP as standard, Cobra 8 is an open system that can accept 1-bit TIFF files from any source. Software options available include full PDF workflow, imposition, In-RIP trapping and proofing.

INTERFACE MEETS INNOVATION.

A new simple Java-based user interface for 'point and click' plate production has been specifically designed for the Cobra 8. With 'at a glance' multiple views, a home view showing previews and status of current jobs, overviews of all queues and completed plates, it is a powerful and highly effective tool in the plate production process.



PERFORMANCE MEETS COST EFFICIENCY.

Combining all these benefits with low cost of ownership, Cobra 8 provides affordable metal plate production with an excellent price/performance figure. HighWater's Barcode Plate Requeue is included as standard, a unique identification mark is applied to every plate, users can then easily remake plates by simply scanning the barcode. Additional options such as PDF workflow, CIP3/4 ink-key setting and ROOM proofing help to ensure an investment geared for long-term success.

COBRA 8 SYSTEM

STANDARD PACKAGE	Cobra 8 CtP Engine Controller PC CtP Console and utilities Navigator Harlequin RIP Barcode Plate Requeue HWRoam
PROOFING OPTIONS	PixelProof ROOM ProofReady Plugins
WORKFLOW OPTIONS	Quickflow PDF workflow Simple Imposition TrapPro ColorPro HDS
PRESS DATA OPTIONS	KeySetter Light KeySetter Pro KeySetter Connect

RELIABILITY MEETS INNOVATION.

The benefits of using Cobra 8 in your workflow are compelling. Its quality and speed of output let you produce plates to meet the ever increasing demands of today's printer. Cobra's simple and effective design, with remote diagnostics, ensures an extremely high level of reliability with minimum downtime. This will put you ahead of your competition in the quest to satisfy your customers' high expectations.

