

FOUNDER

**Beijing Founder Electronics Co., Ltd.
International Business Division**

Founder Building, No.9, 5th Street, Shangdi
Information Industry Base
Haidian District, Beijing 100085, People's
Republic of China

Tel: +86 10 6298 1440

Fax: +86 10 6298 1440

Email: GASales@founder.com

Website: <http://www.founder.com.cn>

Local Founder Representative:

Asia Pacific:

Mr. Heng LK (Marketing Director)

Tel: + 6019 356 9446

Email: lkheng@founder.com

North America & Latin America:

Mr. Dong, Zaidong (Marketing Director)

Tel: +86 10 6298 1439

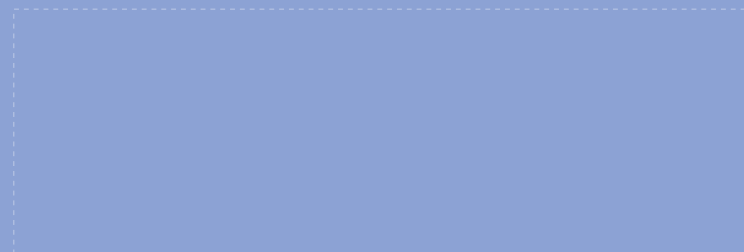
Email: dong_zaidong@founder.com

Europe:

Mr. Wang, Mu (Marketing Director)

Tel: +86 10 8253 1779

Email: wangmu@founder.com

Local Founder Dealer:

Founder and Founder logo are registered trademarks of Founder Group Corporation. ElecRoc, EagleRIP, EagleProof, EagleDot, EagleFAM, EagleAGS, SuperLine and DocuDefend are registered trademarks of Beijing Founder Electronics Co., Ltd.
CIP4 and the CIP4 logo are trademarks of the CIP4 Organization. JDF and the JDF logo are trademarks of the CIP4 Organization.
Other product, font and company names and logos in this document are trademarks or registered trademarks of their respective holders and are hereby acknowledged.

Copyright © 2000-2008 Beijing Founder Electronics Co., Ltd. All Rights Reserved.

Recommended System Configuration:

CPU: Intel® Pentium IV 2 GHz processor

Memory: 2 Gigabytes or above

Hard Disk: 20 Gigabytes free space

Display: 1024 x 768 Color

Network: 100MB Ethernet

OS: Windows 2000 or Windows 2003

Compatible with major software packages:

- Adobe® Illustrator & Indesign & PageMaker
- Corel® CorelDraw
- Adobe® FreeHand
- Microsoft® Office Suite
- QuarkXpress®

EagleRIP PDF 1.7 - PostScript 3



EagleRIP

PDF 1.7 - PostScript 3

- PDF 1.7 - PostScript 3 for superb quality documents
- Ensure output quality and reduce errors with fast and flexible screen previews and dot previews
- Performance that meets your most demanding print production needs
- Save media and time with ganging
- Higher quality print with screening options
- Supports advanced PDF vector trapping for improved quality and productivity



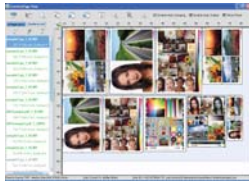
PDF 1.7 - PostScript 3 for superb quality documents

Founder's EagleRIP creates superb quality PDF and PostScript jobs. Complex documents, vivid colors, transparent objects, files with embedded ICC profiles and smooth shading are consistently processed to meet the high standards of the most demanding customer. EagleRIP provides support for features within PDF 1.7 and PostScript 3.



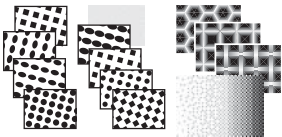
Ensure output quality while reducing errors with fast, flexible and detailed screen and dot previews

Ensure the output to plate is accurate by digitally previewing color and dot shape prior to committing to physical output. EagleRIP lets you preview color separations and composites, and includes preview functions such as Zoom, Negative, Mirror, Rotate and Screen preview of the bitmap dot.



Save media and time with ganging

EagleRIP Ganging Viewer allows the operator to view multiple pages simultaneously, thus reducing the time spent to confirm that all pages have the correct content, and image data is in the correct orientation prior to output. Ganging allows the user of CTF and proofing to maximize the usage of media for lower costs. Ganging can be either automatic or by manual control providing maximum flexibility.



Higher quality print with screening options

EagleRIP screen dot shapes allow users to select the dot that ensures maximum printing quality. Nine standard screenings include Euclidean Round, Rhomb, Ellipse, Diamond, Pure Round, Sharp Ellipse, Square, Cross and FM screening. Optional screenings are EagleFAM (AM & FM hybrid screening) and EagleAGS (gravure printing) are available as plug-ins.

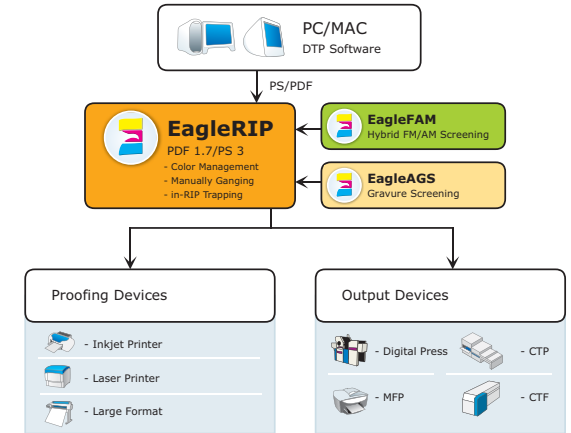


Supports advanced PDF vector trapping for improved quality and production

Founder EagleRIP includes a PDF trapping plug-in option that creates traps between vector objects, images and shadings. This plug-in traps vector images with high speed without compromising quality.

Performance that meets your most demanding print production needs

Founder's EagleRIP is multi-threaded and scales with system platform performance. For maximum flexibility EagleRIP supports over 100 CTP, CTF, Indigo press, laser printer and digital proofer devices, as well as 1 bit TIFF, 8-bit TIFF and Winprint output used by most leading vendor print devices.



Key Features

- PostScript 3 and PDF 1.7 RIP with PDF native interpreter
 - Supports PDF 1.7 document features including transparency, embedded ICC Profiles, 128-bit encryption, JPEG2000 filter and Cross-Reference stream.
- Supports more than 100 CTP, CTF, Indigo press, digital proofer and laser printer devices
- TIFF 1-bit output, 8-bit TIFF and WinPrint output
 - Productive R. O.O.M. (Rip Once, Output Many) solution accepted by digital proofing, CTF/CTP workflow solutions
 - Driver can generate 1-bit TIFF file with no compression and CCITT GROUP4, or 8-bit TIFF file with no compression, LZW and Packbits
- Fast and flexible screen preview and dot preview
- Support for third party plug-in trapping solutions
- Built-in manual and automatic ganging and ganging preview
- Optional CIP3 output plug-in produces PPF file which reduces set up time and wastage.
- Screening
 - 9 built-in screen shapes, Euclidean Round, Rhomb, Ellipse, Diamond, Pure Round, Sharp Ellipse, Square, Cross and FM screening
 - Optional Screenings: EagleFAM (AM & FM hybrid screening) and Eagle AGS (gravure printing)
- Supports TrueType and CID font and better performance of Asian fonts
- Flexible network printing: NT Pipe, AppleTalk & Hot Folder
- Tiffload plugin for 1-bit TIFF PostRIP imposition workflow solution
- SDK (Software Development Kit) available for OEMs